



THE UNIVERSITY OF ARIZONA  
RESEARCH, INNOVATION & IMPACT

Center for the  
Philosophy of Freedom

*we're so glad you're here*

# WELCOME

## THE UNIVERSITY OF ARIZONA IN SUNNY TUCSON, AZ U.S.A

### LAND GRANT ACKNOWLEDGEMENT

We respectfully acknowledge the University of Arizona is on the land and territories of Indigenous peoples. Today, Arizona is home to 22 federally recognized tribes, with Tucson being home to the O'odham and the Yaqui. Committed to diversity and inclusion, the University strives to build sustainable relationships with sovereign Native Nations and Indigenous communities through education offerings, partnerships, and community service.

*learn all about your upcoming stay*

# **EMLE AZ GUIDEBOOK**

---

"Arizona is a state of extraordinary contrasts, where every turn of the road brings into view something grand, mysterious, or lovely." – Zane Grey



1

## GENERAL

Learn what it takes to become a wildcat



2

## BEFORE ARRIVAL

Preparedness is the best travel friend



3

## UPON ARRIVAL

Make the most of your time here

# TABLE OF CONTENTS

The University of Arizona .....	5
The Center for the Philosophy of Freedom ...	5
EMLE Arizona .....	6
Meet The Team .....	8
Becoming a Wildcat .....	9
Exploring Tucson, AZ, U.S.A .....	12

Checklist .....	16
Visa Tips .....	17
Cat Card .....	17
Health .....	18
Housing .....	19

Welcome Event .....	21
Your Student Ambassador & Campus Life ...	21
Important Miscellaneous .....	24



*becoming a wildcat*  
**GENERAL**

---

"Arizona is the place where the wild west meets the comfort of modern living. It's the best of both worlds."  
- Paul Theroux

## THE UNIVERSITY OF ARIZONA

As Arizona's land-grant university, we are driven to do great things. It's our passion to transform the lives of our student Wildcats and to solve some of the biggest challenges facing our state and the world.

But what makes us unique is how we do it. We live our purpose, mission and values every day. And we do this in one of the most incredible places on Earth, surrounded by majestic mountains and Saguaro forests, and under a sky that ignites imaginations with cotton candy sunsets and diamond-filled nights. At the University of Arizona, everywhere you look is filled with wonder.

*The University of Arizona is a place of wonder where you can do the extraordinary with extraordinary people.*

## THE CENTER FOR THE PHILOSOPHY OF FREEDOM

The Center for the Philosophy of Freedom, or as we call it "The Freedom Center" was founded in 2008 and is a University Center in the Office for Research, Innovation & Impact. The Freedom Center provides research, teaching, and programming that is grounded in individual freedom and honors people's right to constructively disagree. Think of the Freedom Center as your portal into your experience at the University of Arizona.



# ABOUT

## EMLE ARIZONA

The Master of Legal Studies in Law & Economics ("MLS - L&E") was created by Freedom Center Associate Director Saura Masconale in 2020 in collaboration with the University of Arizona James E. Rogers College of Law. This program provides students with a deep understanding of the ethical, economic and legal issues confronting liberal democracies and their political institutions, while equipping them with analytical tools to assess their impact on individuals and society.

The College of Law offers various concentrations tailored to specific career paths, with the MLS - L&E concentration exploring the legal foundations of civil, political, economic, and social rights, highlighting the ways in which individuals, citizens, and members of diverse communities navigate and interact with the legal, economic and political system. The concentration also offers special tracks, including one for state legislators.

The Freedom Center shares academic and administrative responsibility for the **MLS-L&E** by providing faculty to teach concentration courses and offering administrative support to students, including scholarships. The Center's engagement in the Law and Economics concentration is part of the Center's educational mission, which reflects the commitment to train critical thinkers across all levels, from K-12 to undergraduate, graduate and post-doctoral studies.

*Drawing from philosophy, politics, economics, law, and ethics, the Center's faculty, including the Center's Visiting Fellows, explore the elements shaping just societies that promote both liberty and equality.*

The Center's impact comes through faculty research, publications, edited journals, graduate education, academic programs, and community events designed to foster constructive public debate.

## DEGREE & CURRICULUM

EMLE students will receive an MLS degree from the University of Arizona, while being offered dedicated MLS L&E classes supported by the Center and delivered by top-tier faculty from leading North American universities and across the U of A campus. These classes - described next - include **Justice, Law, and Capitalism** and **Regulation of Emerging Technology**.





# curriculum at **EMLE AZ**

## **JUSTICE LAW AND CAPITALISM (2.5 ECTS)**

This course is divided in two parts. The first part will expand the study of law and economics analysis (both theoretical and empirical) to the study of ethics. This will include an introduction to normative ethics, the problem of deontological and ethical preferences, justice theories and L&E and the connection between L&E and political philosophy. The second part of the course will focus on the application of the law, economics, and ethics method to a specific subject matter. The focus of the course for the 2024-25 academic year will be [please eliminate thus] on Law, Economics, and Ethics of Corporate Social Responsibility and ESG. More particularly, specific topics that will be covered will include: CSR, market failures and government failures, supply and demand models of CSR-ESG, ESG and divisive "moral goods," and the moral corporation versus freedom, equality, and procedural values.

## **REGULATION OF EMERGING TECHNOLOGIES (2.5 ECTS)**

This course focuses on the legal regulation of computer technology and emerging issues in the fields of law and computer science. The theoretical background for the course will be Larry Lessig's "four forces" (law, code, markets, and social norms) along with select computer science concepts such as the classic CIA triad (Confidentiality, Integrity, Availability), fundamentals of object-oriented programming, and the end-to-end design principles of the early Internet. Core themes of the class will include (i) the interplay between governance by law and the horizon of technical capabilities created by computer science, and (ii) the tradeoffs that exist between an efficiency vs. a rights-based approach to computer science, and how these tradeoffs can be normatively solved. Relatedly, the course will also expose students to some of the major ethical issues arising from computer science such as the ethics of coding and AI, the L&E of intellectual property protection, open access / open-source regimes, and the reuse of materials created by others; distributed platforms such as blockchain protocols (e.g., Ethereum) and P2P protocols (e.g., BitTorrent); the hacking ethos and ecosystem; cyberwarfare and cybersecurity; and more.



*meet the team*

# GET ACQUAINTED

## STAFF

### **EMLE Arizona Local Coordinator**

Saura Masconale [saura.masconale@arizona.edu](mailto:saura.masconale@arizona.edu)

### **EMLE Academic Coordinator**

Simone M. Sepe [sms@arizona.edu](mailto:sms@arizona.edu)

*Professor Sepe should be contacted for all questions related to your thesis or other academic questions.*

### **EMLE Arizona Office Manager**

Kerry Montano [kdmontan@arizona.edu](mailto:kdmontan@arizona.edu)

*Go-to for questions related to the program that cannot be answered by the EMLE website*

### **EMLE Arizona Student Ambassador**

Lauren Easter [leaster1@arizona.edu](mailto:leaster1@arizona.edu)

*Your on campus resource for navigating University life*

## FACULTY

[Prof. William Bratton](#)

[Prof. David Clark](#)

[Prof. Roberto Giacobazzi](#)

[Prof. Saura Masconale](#)

[Prof. Alan Miller](#)

[Prof. Barak Orbach](#)

[Prof. Simone Sepe](#)

## MAIN OFFICE

EMLE Arizona

Social Sciences building Rm#213

1145 E South Campus Drive

Tucson AZ 85721-0027

Hours: Monday-Friday from 9am-5pm

Phone: 1.520.626.6646

PHOTO: UNIVERSITY OF ARIZONA, OLD MAIN UNDER THE STARS







## STEP BY STEP

### 1. Apply to the MLS Program

You have already been accepted to the EMLE program, but you need to establish yourself as a University of Arizona student.

### 2. Get Connected to Campus

Emailing your EMLE AZ Office Manager after your application will expedite your Student ID. Once you have your Student ID, you will sign up for a NetID.

### 4. Apply for your Visa

Stay in touch with your EMLE contact to ensure you receive your I-20 form, needed for your Visa application

# BECOMING A WILDCAT

## MLS APPLICATION TIPS

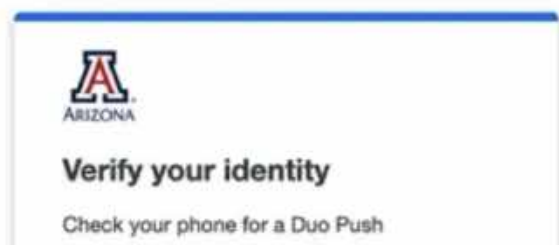
Please note you will need to include a résumé with your MLS Application. However, you do not need to send in any of the other attachments. The application's primary purpose is to establish your unique Student ID (SID)

## SIGN UP FOR YOUR 'NETID'

Once you receive your SID, you will use that to create a unique NetID. Your NetID will allow access to University services, including [UAccess](#), [D2L](#), and campus WiFi. You will also automatically get a new U of A email address that will be in this format: "NetID@arizona.edu". [NetID tutorials can be found here.](#) \*\*Your I-20 will be sent to this email.

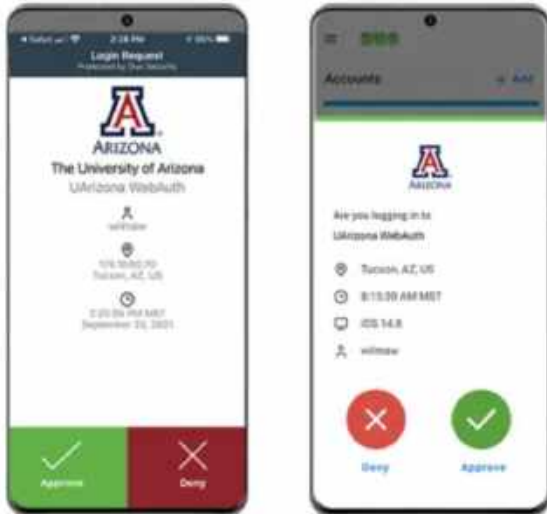
## DOWNLOAD THE DUO APP

The university uses two factor authentication in the form of DUO. You can [download here for Android users](#) or [here for Apple users](#).



## DUO APP CONT...

Make sure push notifications are on. When you login to any U of A service or site you will be prompted to confirm via push notification.



### TECH HELP

For questions or support related issues, please contact the 24/7 IT Support Center at (520) 626-TECH (8324)

## APPLY EARLY FOR YOUR VISA

After you have received your SID and PIN and set up your NetID, we encourage all students who need a visa to make sure you start all necessary procedures **as soon as possible**. You will be applying for [F-1 Immigration documents](#).

Go to the [International Student Services \(ISS\) website for Graduate Students](#) to apply for your I-20:

1. Launch MyGlobal.
2. Open appropriate e-form under "Newly Admitted Students."
3. Upload your passport biographical page.
4. Upload your funding documents (bank statements from checking or savings accounts, or proof of scholarship/sponsorship).
5. Upload your Declaration of Support (for funding from family/friends).

**APPLICATION TIPS:** Citizenship=Non-Resident Alien (most times), Visa Type=F-1, Visa#=leave blank

# VISAS





## VISA INFORMATION

A valid visa is required for all new students entering the U.S., except citizens of Canada and Bermuda. The expiration date on your visa is the last day you can use your visa to enter the U.S. It does not determine how long you can remain in the U.S. If your visa expires while you are in the U.S., you can remain in the country as long as your I-20 is valid and you are maintaining your student status.

If you leave the U.S. with an expired visa, you must renew it at an embassy or consulate outside the U.S. in order to reenter.

### STUDENTS ENTERING THE U.S. FOR THE FIRST TIME

Customs and Border Protection may check that you plan to attend the school specified on your F-1 visa (or, for citizens of Canada or Bermuda, that you intend to attend the school that issued the I-20). This requirement applies only for initial entry in F-1 status.

The I-20 is a Certificate of Eligibility that reflects the information in your SEVIS record. SEVIS is a Department of Homeland Security online database for international student records. I-20 and DS-2019 records are issued and maintained through SEVIS. It lists your biographical information, program of study, expected degree completion date, estimated expenses, and source of funding.

It also contains space for DSO-authorized benefits, like off-campus employment or reduced course load.

If you travel outside the U.S. after your initial entry, you must have a valid signature from a DSO on the second page of your I-20 to reenter.

Learn more on [travel.state.gov](https://travel.state.gov).

### PORT OF ENTRY STAMP

When you enter the U.S., a Customs and Border Protection officer may stamp your passport. The port of entry stamp contains the date you entered, your visa category and D/S for the "admit until date". D/S stands for Duration of Status. It means you may remain in the United States as long as your I-20 is valid and you are maintaining your student status. It also gives you a 60-day grace period to leave the U.S. at the end of your program.





# *explore the jewel of the southwest* **TUCSON, AZ U.S.A**

Welcome to Tucson, often referred to as the 'jewel of the Sonoran Desert'! Tucson is a destination for outdoor recreation, home to multiple world-renown restaurants, recognized for its premier museums, and famous for its vibrant cultural heritage. This Southwestern desert oasis boasts sunny scenery and entertainment year around.

## **OUTDOOR RECREATION**

Tucson is premier destination for outdoor experiences and exploration. Saguaro National Park is one of the Southwest's most well-known attractions. Madera Canyon, a famous destination for wildlife enthusiasts, and Catalina State Park are also both located within 30 mi. of Tucson. Also note that there is a great deal of variety, and not all destinations resemble the typical image many may hold of the Sonoran Desert. One does not have to go far to find diverse terrain and climates.

## **NEARBY DESTINATIONS**

The **Phoenix Metro Area** (2 hr. drive), is home to sporting events, it's own bustling nightlife and restaurant scene, musical entertainment, resorts, and more. Events such as the Phoenix Open, Barret Jackson, and musical entertainment draw attendees from all over the world to enjoy all the 'Valley of the Sun' has to offer. It is often a popular weekend or week-long getaway for students.





## NEARBY DESTINATIONS CONT.

Outdoor enthusiasts interested in exploring other areas of the state may find themselves drawn to exploring **Sedona** and **Flagstaff** (4 hr. drive). At just a day's drive, one may head to these destination areas to find scenic red rock formations, aspens, winter sport recreation, and charming historical mountain towns.



## RESTAURANTS

Find legendary flavors and see why Tucson is a UNESCO City of Gastronomy and a haven for food lovers. Tucson boasts a diverse mix of eclectic flavors. Options that have topped recent popular guides are Tito & Pep, Anello, Seis, and Beaut Burger. In addition to plenty of bustling restaurants, this food scene also lays claim to many favorite bakeries and breweries.



## MUSEUMS & ART

Discover how diverse a living desert can be at Tohono Chul, Tucson Botanical Gardens, and Arizona-Sonora Desert Museum. Or travel through time to the unique architectural and cultural legacy of Mission San Xavier del Bac or to a century of military and aerospace history with 300 vintage-to-modern aircraft at the Pima Air & Space Museum.



culture, local attractions + great eats

# EXPLORING TUCSON

[UA CAMPUS LIFE](#)

Tucson, also known as "The Old Pueblo", was founded on August 20, 1776 and is considered the historic jewel of the Sonoran Southwest. Learn more about Tucson, its rich history and things to do via the links in this banner.

[VISITTUCSON.ORG](http://VISITTUCSON.ORG)

## COFFEE SHOPS & GOOD EATS

*Historic Fourth Ave*

[Carusos Italian](#)

[Boca Taco](#)

[Exo Coffee \(6th ave\)](#)

[Bisonwitches](#)

*Downtown Tucson*

[Ceres Pasta & Cafe](#)

[JoJos Restaurant](#)

[Juniper Gin Bar](#)

[Cartel Coffee](#)

[Historic El Charro Mexican Food](#)

[The Monica Open Kitchen & Bar](#)

[The Cup at Historic Hotel Congress](#)

[Unicorn Zebra](#)

*Near Campus*

[Agave House](#)

[Caffe Luce](#)

[Scented Leaf Tea House & Lounge](#)

[Frog & Firkin](#)

[Jimmy's Pita & Poke](#)

[Kababague Indian Grill](#)

[Tumerico Latin Inspired Vegan/Vegetarian](#)

*Mercedo District*

[Agustin Kitchen French Bistro](#)

[La Estrella Traditional Mexican Bakery](#)

[Kukai Fresh Japanese Cuisine](#)

[La Chaiteria Mexican Food](#)

[Decibel Coffee](#)

[Beaut Burger](#)

[Westbound](#)

[Pat's Famous Chili Dogs](#)

## MARKETS & GROCERY

**Time Market**

444 E University (Near Campus)

**Flora's**

2513 E 6th St (Near Campus)

**Johnny Gibson's**

11 S 6th St (Downtown)

**Food Conspiracy Co-op**

412 N 4th Ave

**Whole Foods**

3360 E Speedway (Central)

**Trader Joes**

3 locations

**Barrio Bread**

18 S Eastbourne (Downtown)

James Beard Award-Winning Baker!

**Rillito Farmers Market Sundays**

Rillito Race Track, 1st & River (North)

**Safeway**

1551 W. St. Mary's (Close to Monier)

## THINGS TO DO

**Desert Museum**

**Old Tucson**

**Museum of Contemporary Art**

**Tucson Museum of Art**

**Tucson Murals**

**Tucson Breweries**

**Mission San Xavier del Bac**

**Hiking**

Tumamoc Hill (Easy-Moderate)

Painted Hills Trail (Easy)

Sabino Canyon (NE Tucson, All Levels)

Mount Lemmon (NE Tucson, All Levels)

Saguaro National Park (East & West)



*get ready, get set, travel*

# **BEFORE ARRIVAL**

---

"The beauty of Arizona lies in its extremes: burning days, chilly nights, silent deserts, bustling cities."

– Willa Cather

# CHECKLIST

## NOTES

### BY NOW YOU HAVE

- ☒ Applied to the MLS program
- ☒ Have your Student ID
- ☒ Created your MyGlobal account
- ☒ Requested Your I-20
- ☒ Created your NetID
- ☒ Downloaded & Connected the DUO app
- ☒ Ensure you have access to UAccess and CatMail

### START PLANNING FOR

- ☐ Scheduling your Visa Interview
- ☐ UA Health Insurance or exemption
- ☐ Proof of MMR Vaccine
- ☐ Arrange for Housing
- ☐ Arrange for Travel
- ☐ Payment of your "Seat Deposit"
- ☐ Orientation
- ☐ Getting your CatCard
- ☐ Setting up a bank account as needed
- ☐ Disability resources as needed



## VISA & ENTRY TIPS

Once you have obtained your visa, you are ready to travel to the US. Visit the [US Customs and Border Protection website](#) for details regarding preparing to enter the US and what to bring.

Bring all of your immigration documents that pertain to your status, and keep these documents with you at all times during your travel. Do not leave any of these documents in your luggage as you will need to present them for inspection at the US port of entry before you can pick up your luggage in the US.

When you arrive, a US Customs and Border Protection (USCBP) officer will examine the following documents:

- Passport (valid at least six months beyond date of entry)
- Valid visa
- All immigration documents (Form I-20(s) for F-1 students)

We recommend that throughout the duration of your stay in the U.S., each time you enter the U.S. from international travel, that you retrieve the electronic I-94 record to confirm you have been accurately admitted to the U.S. in the correct status and save or print your entry information from the [CBP website](#).

## CAT CARD

The Cat Card is our student ID card – but it is much more than that. The Cat Card not only stores money. It also lets you into certain buildings after usual open hours if you have access to those buildings.

### Cat Cash

*This account is for storing money for printing on campus computers, making copies, paying at one of our parking garages, and dormitory laundry services.*

### Meal Plans

*You can put money on your Cat Card for your meal plan. Various meal plans are explained [here](#).*

### Wells Fargo Banking

*Wells Fargo is a bank here in the US. If you have a bank account with Wells Fargo you can link your Cat Card with your Wells Fargo bank account and use the card for ATM transactions and to make purchases with a PIN number that you receive from Wells Fargo.*



## HEALTH

Campus Health – the University of Arizona has health services right here on campus! All UA students who are currently enrolled are eligible for services. Campus Health services include everything from same day appointments for urgent and unexpected medical needs, mental health support, primary care, and other services. [International Student Services](#) has a comprehensive list of these services as does [Campus Health](#).

The University of Arizona requires all International Students on non-immigrant visas (degree and non-degree seeking, resident or non-resident tuition) registered for at least 1 credit hour to carry the [UA Student Health Insurance Plan](#), unless you qualify for an [exemption](#).

## TUITION & FEES

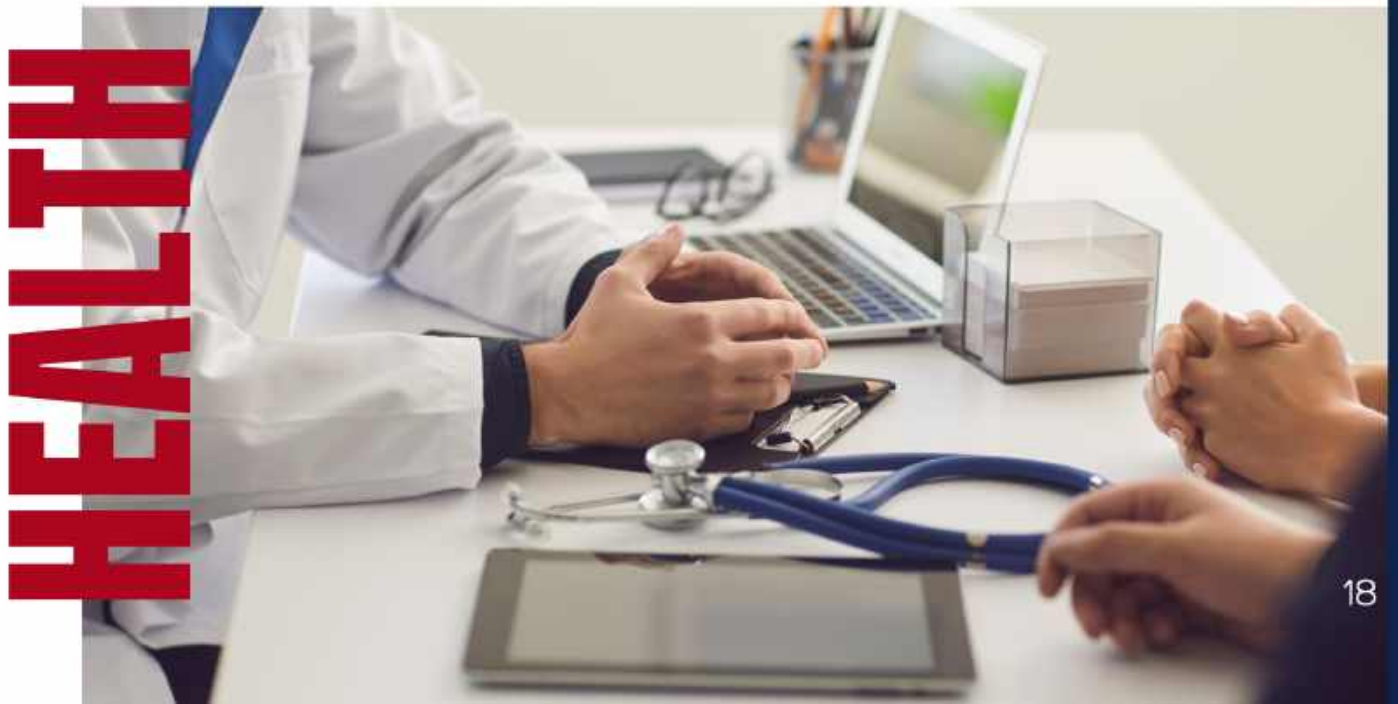
You will be able to pay for any University fees accrued during your stay through your [UAccess](#) account. If applicable, tuition is paid per semester/session and it must be paid by the first day of class. You will only pay for the amount of tuition due at that moment in time. The office in charge of financial services is the [Bursar's Office](#).

### CAMPUS HEALTH

Most services can be offered both in-person and virtually. For any questions please call 520.621.9202 or 520.570.7898 and for Mental Health 24/7 520.621.3334

### EMERGENCIES

Call 911 or go to the closest emergency room.







# HOUSING

## HOUSING

Please note that you must secure your own housing! You have several options for housing in Tucson, but if not done in a timely manner, renting a room or an apartment in Tucson is a challenging task.

We have compiled a list of fully furnished apartments that offer month-to-month leases to aid in your search.

### West University Studio

Utilities Included with a price of \$1250/month, this studio apartment is a 5min walk to popular spots near campus like University Blvd. and 4th Ave. For more information or inquiries, please contact the owner [here](#)

### La Vita House

Priced at \$800/month, this recently renovated 1 bed apartment is within walking distance of the university. For more information or inquiries, please contact the owner [here](#)

### University Manor

Prices range from \$819 - \$919/month depending on apartment type (1 bed - studio). In walking distance to campus and pet friendly. For more information and inquiries, please contact owners [here](#)

Alternatively, you may consider:

Checking rates for fully-furnished and hosted homes at [Airbnb](#).

*Airbnb is an online platform where people can book short- or long-term stays in unique accommodations worldwide making it a practical option for international students studying abroad, offering comfortable spaces and flexible stays to help you feel at home while adjusting to life in a new city.*

Viewing a complete list of off-campus housing options.

*The full list of off campus housing is at [offcampus.arizona.edu](http://offcampus.arizona.edu)*

*If you are looking to live with other Wildcats or connect and find suitable candidates for roommates, visit [Roommate Finder](#), located on the home page of [offcampus.arizona.edu](http://offcampus.arizona.edu) site.*

*time to get excited*

# UPON ARRIVAL

---

"Arizona's lure is not just in its deserts; it's also in its mountains, rivers, and fascinating history."

– Amelia Earhart



## WELCOME EVENT

We can't wait to meet you! After you arrive and move in, the Freedom Center will host a welcome event and party. You and your EMLE colleagues will get a chance to meet our EMLE faculty and university students. This is a great time to get to know the faculty and learn more about the courses and chat with them about thesis ideas. You will meet University of Arizona students too! Our students are a great resource for you to ask questions about campus life, favorites places to eat and best places to study. You will get an invitation with details with your welcome packet!

## YOUR DEDICATED STUDENT AMBASSADOR

As an international student, we understand that studying abroad is an exciting adventure, but it can also come with challenges. To help you settle in and make the most of your time here, we've appointed a Student Ambassador—a dedicated peer who will serve as your go-to resource for navigating university life, both academically and socially. Your Student Ambassador is an alum of the Master of Legal Studies Program and an employee of the university and is here to answer questions, offer advice, and guide you through various aspects of university life. See how your ambassador can assist you on the next page.

# WELCOME





## CAMPUS NAVIGATION

If you need help finding your classes or getting familiar with the campus, your Student Ambassador can provide detailed directions and offer a campus tour to help you feel at home. Your Student Ambassador will also keep you informed about important campus events, such as orientations, student fairs, and social gatherings, so you don't miss out on opportunities to get involved.

## STUDENT EXPERIENCE

Adapting to a new learning environment can take time, and your Student Ambassador is here to help you navigate local customs and social norms. They can share their own experiences and offer tips for settling in. The Student Ambassador can give you tips on how to strike a healthy balance between your academic responsibilities and social life. They'll help you understand the importance of time management, how to approach professors with questions, and how to make the most of the social opportunities available to you. If you're feeling overwhelmed, they can offer tips for managing stress and suggest resources on campus to help you maintain your well-being.

## ACADEMIC SUPPORT

Whether it's understanding the grading system, communicating with professors, or finding study resources, your Student Ambassador can help you understand academic expectations and connect you with support services like tutoring or writing assistance. Your Student Ambassador can advise you on how to approach professors and teaching assistants with questions or concerns. They can also help you understand office hours and the best way to participate in class discussions.

## SOCIAL ACTIVITIES & EVENTS

Whether you're interested in sports, music, or academic clubs, your Student Ambassador can introduce you to various student organizations on campus. They'll help you find groups where you can connect with others who share similar interests. Your Student Ambassador can keep you updated on social events, clubs, and activities on campus to enrich your experience.

### CONTACT INFO

Your dedicated student ambassador is Lauren Easter  
leasterl@arizona.edu



## PERSONAL WELL-BEING AND SAFETY

If you're feeling homesick, stressed, or unsure about anything, your Student Ambassador is someone you can talk to. They can provide guidance on mental health resources, safety on and off campus, and general well-being. Your Student Ambassador will help you understand the campus's safety protocols, how to use public transportation safely, and the best practices for navigating the area. They will ensure you know where to find emergency contacts and resources, including the campus security office and local police. If you need medical help, your Student Ambassador can guide you to on-campus health services or help you find nearby clinics. They can also explain how to access emergency care if necessary.

## HOW TO CONTACT

Email will be the best method for connecting directly with your Student Ambassador. Don't hesitate to reach out for help, advice, or just to chat. They are here to ensure that your experience is as smooth, enjoyable, and enriching as possible. Your Student Ambassador is here to make your time at our university enjoyable and successful. Whether you need practical advice, academic guidance, or just someone to chat with, they are here to help. Don't hesitate to get in touch—they're just an email away!





## BANKS

The University of Arizona has several options for banking. We have ATMs and banks on campus at the Student Union as well as ATMs and banks near the University. Please work with your local bank to find a partner bank in the U.S. for your stay. You may also want to contact your credit card institutions and notify them of your international travel dates.

## PUBLIC TRANSPORTATION

Our campus is quite large! Walking from one end to the other is great when the sun is out and the temperatures are nice, but there are times when walking isn't feasible! The University of Arizona has a free, on campus transportation system called CatTran. The CatTran system runs all day and into the evening. To find all the routes, time and stops, [visit the CatTran site here.](#)

We also have Bicycle Services on campus. [Visit this site](#) for more information!

Although Tucson is quite expansive in terms of square miles, we do not have a mass transit system or rail system. We do have a city bus system, called SunTran; you can [find the detailed schedules here.](#) As a student, you can buy a discounted pass. [Visit this site](#) and look at the U-Pass menu. App/rider services like Uber and Lyft are also available.

## TELEPHONE

If your phone is unlocked and supports GSM networks, you can use it with a local U.S. SIM card. Many carriers, such as AT&T, T-Mobile, and Verizon, offer prepaid plans that include talk, text, and data, and these can be purchased without a long-term contract. You'll find SIM cards at major retailers, cell phone stores, or online. Make sure to check if your phone is compatible with the carrier's network before purchasing a SIM.

If you prefer not to change SIM cards, check with your European carrier to see if they offer an international roaming plan for the U.S. These plans can sometimes be more expensive than using a SIM.



*we look forward to your visit*

**BEAR DOWN!**

---

On behalf of the Freedom Center and the  
University of Arizona, thank you for choosing  
EMLE Arizona!